

Hardness <b>100 ShA - 55 ShD</b>
Pretension <b>0.5 - 2%</b>
Temperature range <b>-30°C/+90°C</b>
Friction coefficient HDPE : <b>0.15 - 0.2</b> Steel : <b>0.35 - 0.4</b> Stainless steel : <b>0.5</b>
Roll length <b>30 m</b>



solid

## DEL/ROC black



cogged

Reference	Traction force (daN)	Primitive pulley $\varnothing$ (mm) recommended	mini
DRVN10	22	120	100
DRVN13	40	160	140
DRVN17	74	220	200
DRVN22	122	280	250

Dimension (mm)	Pretension
10x6 (Z)	2%
13x8 (A)	2%
17x11 (B)	2%
22x14 (C)	2%

Reference	Traction force (daN)	Primitive pulley $\varnothing$ (mm) recommended	mini
DRVNCR10	15	100	80
DRVNCR13	28	120	100
DRVNCR17	51	160	140
DRVNCR22	85	240	190



solid

## DEL/ROC white



cogged

Reference	Traction force (daN)	Primitive pulley $\varnothing$ (mm) recommended	mini
DRVW10	22	120	100
DRVW13	40	160	140
DRVW17	74	220	200
DRVW22	122	280	250

Dimension (mm)	Pretension
10x6 (Z)	2%
13x8 (A)	2%
17x11 (B)	2%
22x14 (C)	2%

Reference	Traction force (daN)	Primitive pulley $\varnothing$ (mm) recommended	mini
DRVWCR10	15	100	80
DRVWCR13	28	120	100
DRVWCR17	51	160	140
DRVWCR22	85	240	190



solid

## SUPERGRIP coating



cogged

Reference	Traction force (daN)	Primitive pulley $\varnothing$ (mm) recommended	mini
DRVN10NA	22	120	100
DRVN13NA	40	160	140
DRVN17NA	74	220	200
DRVN22NA	122	280	250

Dimension (mm)	Pretension
10x6 (Z)	2%
13x8 (A)	2%
17x11 (B)	2%
22x14 (C)	2%

Reference	Traction force (daN)	Primitive pulley $\varnothing$ (mm) recommended	mini
DRVNCR10NA	15	100	80
DRVNCR13NA	28	120	100
DRVNCR17NA	51	160	140
DRVNCR22NA	85	240	190



# DEL/SAN reinforced V belts

Hardness <b>95 ShA</b>
Pretension <b>see table</b>
Temperature range <b>-20°C/+70°C</b>
Friction coefficient HDPE : <b>0.20</b> Steel : <b>0.4</b> Stainless steel : <b>0.5</b>
Roll length <b>30 m</b>



solid

Reference	Traction force (daN)	Primitive pulley $\varnothing$ (mm) recommended	Primitive pulley $\varnothing$ (mm) mini
DSVBAR13	35	150	130
DSVBAR17	60	180	160
DSVBAR22	95	260	240



cogged

Reference	Traction force (daN)	Primitive pulley $\varnothing$ (mm) recommended	Primitive pulley $\varnothing$ (mm) mini
DSVBAC13	35	120	100
DSVBAC17	60	150	130
DSVBAC22	95	210	180

## DEL/SAN blue Aramid reinforced



solid

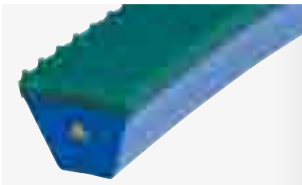
Reference	Traction force (daN)	Primitive pulley $\varnothing$ (mm) recommended	Primitive pulley $\varnothing$ (mm) mini
DSVBAR13NA	35	150	130
DSVBAR17NA	60	180	160
DSVBAR22NA	95	260	240



cogged

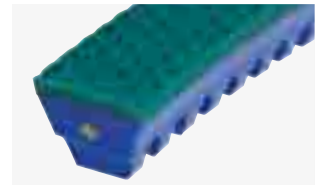
Reference	Traction force (daN)	Primitive pulley $\varnothing$ (mm) recommended	Primitive pulley $\varnothing$ (mm) mini
DSVBAC13NA	35	120	100
DSVBAC17NA	60	150	130
DSVBAC22NA	95	210	180

## SUPERGRIP coating



solid

Reference	Traction force (daN)	Primitive pulley $\varnothing$ (mm) recommended	Primitive pulley $\varnothing$ (mm) mini
DSVBAR13SPI	35	170	150
DSVBAR17SPI	60	200	180
DSVBAR22SPI	95	280	260



cogged

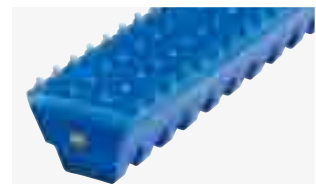
Reference	Traction force (daN)	Primitive pulley $\varnothing$ (mm) recommended	Primitive pulley $\varnothing$ (mm) mini
DSVBAC13SPI	35	140	120
DSVBAC17SPI	60	170	150
DSVBAC22SPI	95	230	200

## SOUPLEX 85 Sha surface



solid

Reference	Traction force (daN)	Primitive pulley $\varnothing$ (mm) recommended	Primitive pulley $\varnothing$ (mm) mini
DSVBAR13TPI	35	160	140
DSVBAR17TPI	60	190	170
DSVBAR22TPI	95	270	250



cogged

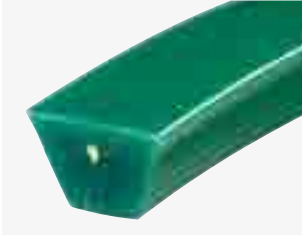
Reference	Traction force (daN)	Primitive pulley $\varnothing$ (mm) recommended	Primitive pulley $\varnothing$ (mm) mini
DSVBAC13TPI	35	130	110
DSVBAC17TPI	60	160	140
DSVBAC22TPI	95	220	190

## TOTALGRIP 70 Sha surface



# H15/H16 reinforced V belts

Hardness <b>92 ShA</b>
Prefension <b>see table</b>
Temperature range <b>-20°C/+70°C</b>
Friction coefficient HDPE : <b>0.25</b> Steel : <b>0.45</b> Stainless steel : <b>0.55</b>
Roll length <b>30 m</b>



H15  
solid



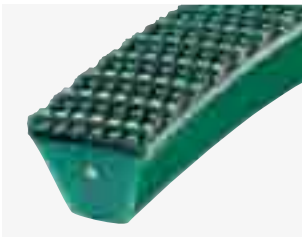
H16  
cogged

## green Aramid reinforced

Reference	Traction force (daN)	Primitive pulley $\varnothing$ (mm) recommended	mini
H15GAR10	15	110	90
H15GAR13	30	140	110
H15GAR17	50	170	140
H15GAR22	75	250	230
H15GAR32	140	350	300

Dimension (mm)	Prefension
10x6 (Z)	1%
13x8 (A)	1%
17x11 (B)	1.5%
22x14 (C)	1.5%
32x19 (D)	1.5%

Reference	Traction force (daN)	Primitive pulley $\varnothing$ (mm) recommended	mini
H16GAC10	15	80	65
H16GAC13	30	100	70
H16GAC17	50	130	110
H16GAC22	75	180	150
H16GAC32	140	300	250



H15  
solid



H16  
cogged

## SUPERGRIP coating

Reference	Traction force (daN)	Primitive pulley $\varnothing$ (mm) recommended	mini
H15GAR10NA	15	110	90
H15GAR13NA	30	140	110
H15GAR17NA	50	170	140
H15GAR22NA	75	250	230
H15GAR32NA	140	350	300

Dimension (mm)	Prefension
10x6 (Z)	1%
13x8 (A)	1%
17x11 (B)	1.5%
22x14 (C)	1.5%
32x19 (D)	1.5%

Reference	Traction force (daN)	Primitive pulley $\varnothing$ (mm) recommended	mini
H16GAC10NA	15	80	65
H16GAC13NA	30	100	70
H16GAC17NA	50	130	110
H16GAC22NA	75	180	150
H16GAC32NA	140	300	250



# H15/H16 reinforced V belts



H15  
solid

Reference	Traction force (daN)	Primitive pulley $\varnothing$ (mm) recommended	mini
H15GAR10SPI	15	130	110
H15GAR13SPI	30	160	130
H15GAR17SPI	50	190	170
H15GAR22SPI	75	270	250
H15GAR32SPI	140	370	320

## SOUPLEX 85 Sha surface

Dimension (mm)	Pretension
10x6 (Z)	1%
13x8 (A)	1%
17x11 (B)	1.5%
22x14 (C)	1.5%
32x19 (D)	1.5%



H16  
cogged

Reference	Traction force (daN)	Primitive pulley $\varnothing$ (mm) recommended	mini
H16GAC10SPI	15	100	80
H16GAC13SPI	30	120	100
H16GAC17SPI	50	150	130
H16GAC22SPI	75	200	170
H16GAC32SPI	140	320	270



H15  
solid

Reference	Traction force (daN)	Primitive pulley $\varnothing$ (mm) recommended	mini
H15GAR10TPI	15	120	100
H15GAR13TPI	30	150	120
H15GAR17TPI	50	180	160
H15GAR22TPI	75	260	240
H15GAR32TPI	140	360	310

## TOTALGRIP 70 Sha surface

Dimension (mm)	Pretension
10x6 (Z)	1%
13x8 (A)	1%
17x11 (B)	1.5%
22x14 (C)	1.5%
32x19 (D)	1.5%



H16  
cogged

Reference	Traction force (daN)	Primitive pulley $\varnothing$ (mm) recommended	mini
H16GAC10TPI	15	90	75
H16GAC13TPI	30	110	80
H16GAC17TPI	50	140	120
H16GAC22TPI	75	190	160
H16GAC32TPI	140	310	260





solid

<b>Hardness 90 ShA</b>
<b>Pretension 3 - 6%</b>
<b>Temperature range -20°C/+70°C</b>
Friction coefficient HDPE : <b>0.25</b> Steel : <b>0.5</b> Stainless steel : <b>0.6</b>
<b>Roll length 30 m</b>

## DEL/FLEX red

Reference	Traction force (daN)	Primitive pulley $\varnothing$ (mm) recommended	Primitive pulley $\varnothing$ (mm) mini
DFVR08	7	55	50
DFVR10	11	80	65
DFVR13	20	100	80
DFVR17	36	150	130
DFVR22	60	220	180
DFVR32	118	300	250

Dimension (mm)	Pretension
8x5 (M)	5%
10x6 (Z)	5%
13x8 (A)	5%
17x11 (B)	5%
22x14 (C)	5%
32x19 (D)	5%



cogged

Reference	Traction force (daN)	Primitive pulley $\varnothing$ (mm) recommended	Primitive pulley $\varnothing$ (mm) mini
-	-	-	-
DFVRCR10	7	60	50
DFVRCR13	14	80	60
DFVRCR17	25	110	90
DFVRCR22	42	150	120
DFVRCR32	82	220	180

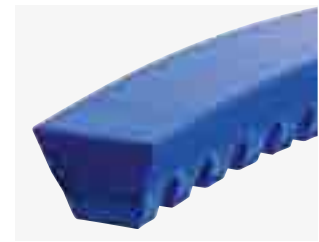


solid

## DEL/FLEX blue

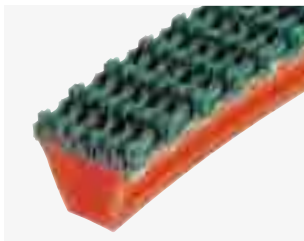
Reference	Traction force (daN)	Primitive pulley $\varnothing$ (mm) recommended	Primitive pulley $\varnothing$ (mm) mini
DFVB06	4.5	45	40
DFVB08	7	55	50
DFVB10	11	80	65
DFVB13	20	100	80
DFVB17	36	150	130

Dimension (mm)	Pretension
6x4 (Y)	5%
8x5 (M)	5%
10x6 (Z)	5%
13x8 (A)	5%
17x11 (B)	5%



cogged

Reference	Traction force (daN)	Primitive pulley $\varnothing$ (mm) recommended	Primitive pulley $\varnothing$ (mm) mini
-	-	-	-
-	-	-	-
DFVBCR10	7	60	50
DFVBCR13	14	80	60
DFVBCR17	25	110	90



solid

## SUPERGRIP coating

Reference	Traction force (daN)	Primitive pulley $\varnothing$ (mm) recommended	Primitive pulley $\varnothing$ (mm) mini
DFVR10NA	11	80	65
DFVR13NA	20	100	80
DFVR17NA	36	150	130
DFVR22NA	60	220	180
DFVR32NA	118	300	250

Dimension (mm)	Pretension
10x6 (Z)	5%
13x8 (A)	5%
17x11 (B)	5%
22x14 (C)	5%
32x19 (D)	5%



cogged

Reference	Traction force (daN)	Primitive pulley $\varnothing$ (mm) recommended	Primitive pulley $\varnothing$ (mm) mini
DFVRCR10NA	7	60	50
DFVRCR13NA	14	80	60
DFVRCR17NA	25	110	90
DFVRCR22NA	42	150	120
DFVRCR32NA	82	220	180

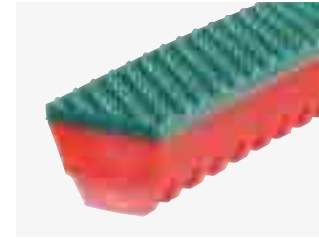




solid

## SOUPLEX 85 Sha surface

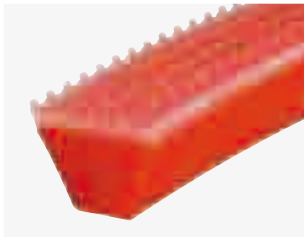
Reference	Traction force (daN)	Primitive pulley $\varnothing$ (mm) recommended	Primitive pulley $\varnothing$ (mm) mini
DFVR10SPI	15	90	80
DFVR13SPI	25	120	100
DFVR17SPI	43	170	150
DFVR22SPI	69	240	210
DFVR32SPI	132	340	260



cogged

Dimension (mm)	Pretension
10x6 (Z)	5%
13x8 (A)	5%
17x11 (B)	5%
22x14 (C)	5%
32x19 (D)	5%

Reference	Traction force (daN)	Primitive pulley $\varnothing$ (mm) recommended	Primitive pulley $\varnothing$ (mm) mini
DFVRCR10SPI	11	80	70
DFVRCR13SPI	19	100	80
DFVRCR17SPI	32	130	110
DFVRCR22SPI	51	170	140
DFVRCR32SPI	96	240	200



solid

## TOTALGRIP 70 Sha surface

Reference	Traction force (daN)	Primitive pulley $\varnothing$ (mm) recommended	Primitive pulley $\varnothing$ (mm) mini
DFVR10TPI	11	85	75
DFVR13TPI	20	110	90
DFVR17TPI	36	160	140
DFVR22TPI	60	230	200
DFVR32TPI	118	310	260



cogged

Dimension (mm)	Pretension
10x6 (Z)	5%
13x8 (A)	5%
17x11 (B)	5%
22x14 (C)	5%
32x19 (D)	5%

Reference	Traction force (daN)	Primitive pulley $\varnothing$ (mm) recommended	Primitive pulley $\varnothing$ (mm) mini
DFVRCR10TPI	7	70	60
DFVRCR13TPI	14	90	75
DFVRCR17TPI	25	120	100
DFVRCR22TPI	42	160	130
DFVRCR32TPI	82	230	190

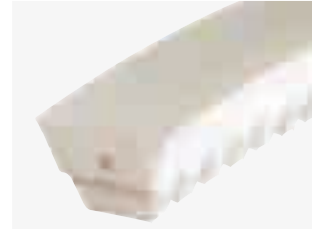


# SOUPLEX reinforced V belts

Hardness <b>85 ShA</b>
Pretension <b>see table</b>
Temperature range <b>-20°C/+60°C</b>
Friction coefficient HDPE : <b>0.35</b> Steel : <b>0.6</b> Stainless steel : <b>0.7</b>
Roll length <b>30 m</b>



solid



cogged

## SOUPLEX white Aramid reinforced

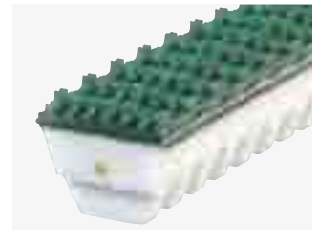
Reference	Traction force (daN)	Primitive pulley $\varnothing$ (mm) recommended	Primitive pulley $\varnothing$ (mm) mini
SXVWAR10	10	90	75
SXVWAR13	25	100	80
SXVWAR17	40	150	130
SXVWAR22	60	220	200
SXVWAR32	120	280	250

Dimension (mm)	Pretension
10x6 (Z)	0.5%
13x8 (A)	0.5%
17x11 (B)	1%
22x14 (C)	1.5%
32x19 (D)	1.5%

Reference	Traction force (daN)	Primitive pulley $\varnothing$ (mm) recommended	Primitive pulley $\varnothing$ (mm) mini
SXVWAC10	10	60	50
SXVWAC13	25	80	60
SXVWAC17	40	110	90
SXVWAC22	60	160	130
SXVWAC32	120	220	180



solid



cogged

## SUPERGRIP coating

Reference	Traction force (daN)	Primitive pulley $\varnothing$ (mm) recommended	Primitive pulley $\varnothing$ (mm) mini
SXVWAR10NA	10	90	75
SXVWAR13NA	25	100	80
SXVWAR17NA	40	150	130
SXVWAR22NA	60	220	200
SXVWAR32NA	120	280	250

Dimension (mm)	Pretension
10x6 (Z)	0.5%
13x8 (A)	0.5%
17x11 (B)	1%
22x14 (C)	1.5%
32x19 (D)	1.5%

Reference	Traction force (daN)	Primitive pulley $\varnothing$ (mm) recommended	Primitive pulley $\varnothing$ (mm) mini
SXVWAC10NA	10	60	50
SXVWAC13NA	25	80	60
SXVWAC17NA	40	110	90
SXVWAC22NA	60	160	130
SXVWAC32NA	120	220	180





solid

## SOUPLEX 85 Sha surface



cogged

Reference	Traction force (daN)	Primitive pulley $\varnothing$ (mm) recommended	Primitive pulley $\varnothing$ (mm) mini
-	-	-	-
SXVWAR13SPI	25	120	100
SXVWAR17SPI	40	170	150
SXVWAR22SPI	60	240	210
SXVWAR32SPI	120	330	280

Dimension (mm)	Pretension
10x6 (Z)	0.5%
13x8 (A)	0.5%
17x11 (B)	1%
22x14 (C)	1.5%
32x19 (D)	1.5%

Reference	Traction force (daN)	Primitive pulley $\varnothing$ (mm) recommended	Primitive pulley $\varnothing$ (mm) mini
SXVWAC10SPI	10	90	75
SXVWAC13SPI	25	100	80
SXVWAC17SPI	40	130	110
SXVWAC22SPI	60	180	150
SXVWAC32SPI	120	240	200



solid

## TOTALGRIP 70 Sha surface



cogged

Reference	Traction force (daN)	Primitive pulley $\varnothing$ (mm) recommended	Primitive pulley $\varnothing$ (mm) mini
-	-	-	-
SXVWAR13TPI	25	110	90
SXVWAR17TPI	40	160	140
SXVWAR22TPI	60	230	200
SXVWAR32TPI	120	300	250

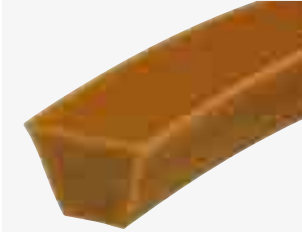
Dimension (mm)	Pretension
10x6 (Z)	0.5%
13x8 (A)	0.5%
17x11 (B)	1%
22x14 (C)	1.5%
32x19 (D)	1.5%

Reference	Traction force (daN)	Primitive pulley $\varnothing$ (mm) recommended	Primitive pulley $\varnothing$ (mm) mini
SXVWAC10TPI	10	80	70
SXVWAC13TPI	25	90	75
SXVWAC17TPI	40	120	100
SXVWAC22TPI	60	170	140
SXVWAC32TPI	120	230	190





Hardness <b>85 ShA</b>
Pretension <b>5 - 8%</b>
Temperature range <b>-20°C/+60°C</b>
Friction coefficient HDPE : <b>0.35</b> Steel : <b>0.6</b> Stainless steel : <b>0.7</b>
Roll length <b>30 m</b>



solid

## SOUPLEX brown

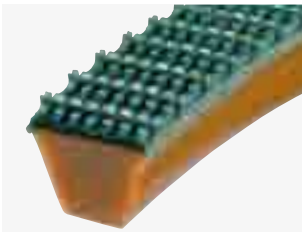


cogged

Reference	Traction force (daN)	Primitive pulley $\varnothing$ (mm) recommended	Primitive pulley $\varnothing$ (mm) mini
SXVM08	4	50	40
SXVM10	6	70	55
SXVM13	12	80	70
SXVM17	22	130	110
SXVM22	36	170	130
SXVM32	71	250	220

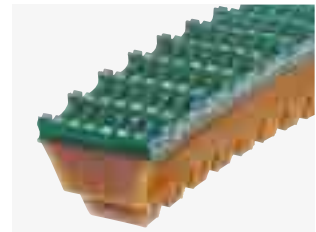
Dimension (mm)	Pretension
8x5 (M)	8%
10x6 (Z)	8%
13x8 (A)	8%
17x11 (B)	8%
22x14 (C)	8%
32x19 (D)	8%

Reference	Traction force (daN)	Primitive pulley $\varnothing$ (mm) recommended	Primitive pulley $\varnothing$ (mm) mini
-	-	-	-
SXVMCR10	4	50	40
SXVMCR13	8	60	50
SXVMCR17	15	90	70
SXVMCR22	25	130	110
SXVMCR32	50	180	150



solid

## SUPERGRIP coating



cogged

Reference	Traction force (daN)	Primitive pulley $\varnothing$ (mm) recommended	Primitive pulley $\varnothing$ (mm) mini
SXVM08NA	4	50	40
SXVM10NA	6	70	55
SXVM13NA	12	80	70
SXVM17NA	22	130	110
SXVM22NA	36	170	130
SXVM32NA	71	250	220

Dimension (mm)	Pretension
8x5 (M)	8%
10x6 (Z)	8%
13x8 (A)	8%
17x11 (B)	8%
22x14 (C)	8%
32x19 (D)	8%

Reference	Traction force (daN)	Primitive pulley $\varnothing$ (mm) recommended	Primitive pulley $\varnothing$ (mm) mini
-	-	-	-
SXVMCR10NA	4	50	40
SXVMCR13NA	8	60	50
SXVMCR17NA	15	90	70
SXVMCR22NA	25	130	110
SXVMCR32NA	50	180	150



# SOUPLEX V belts



solid

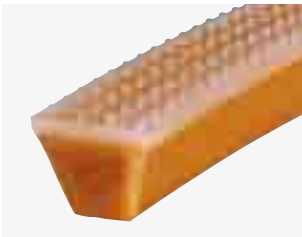
## SOUPLEX 85 Sha surface

Reference	Traction force (daN)	Primitive pulley $\varnothing$ (mm) recommended	Primitive pulley $\varnothing$ (mm) mini
SXVM10SPI	10	80	70
SXVM13SPI	17	100	90
SXVM17SPI	29	150	130
SXVM22SPI	45	190	150
SXVM32SPI	85	280	240



cogged

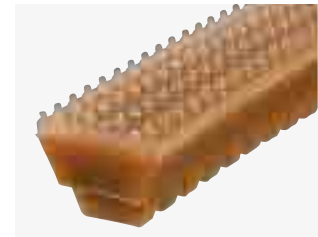
Reference	Traction force (daN)	Primitive pulley $\varnothing$ (mm) recommended	Primitive pulley $\varnothing$ (mm) mini
SXVMCR10SPI	8	70	60
SXVMCR13SPI	13	80	70
SXVMCR17SPI	22	110	90
SXVMCR22SPI	34	150	130
SXVMCR32SPI	64	200	170



solid

## TOTALGRIP 70 Sha surface

Reference	Traction force (daN)	Primitive pulley $\varnothing$ (mm) recommended	Primitive pulley $\varnothing$ (mm) mini
SXVM10TPI	6	75	65
SXVM13TPI	12	90	80
SXVM17TPI	22	140	120
SXVM22TPI	36	180	140
SXVM32TPI	71	260	230



cogged

Reference	Traction force (daN)	Primitive pulley $\varnothing$ (mm) recommended	Primitive pulley $\varnothing$ (mm) mini
SXVMCR10TPI	4	60	50
SXVMCR13TPI	8	70	60
SXVMCR17TPI	15	100	80
SXVMCR22TPI	25	140	120
SXVMCR32TPI	50	190	160

Hardness <b>70 Sha</b>
Pretension <b>10 to 15%</b>
Temperature range <b>-20°C/+40°C</b>
Friction coefficient HDPE : <b>0.5</b> Steel : <b>0.7</b> Stainless steel : <b>0.8</b>
Roll length <b>30 m</b>

## SUPERFLEX translucent



solid

Reference	Traction force (daN)	Primitive pulley $\varnothing$ (mm) recommended	Primitive pulley $\varnothing$ (mm) mini
SFVT06	1.8	25	20
SFVT08	3	35	30
SFVT10	4.5	55	45
SFVT13	8	70	60
SFVT17	13	110	90



cogged

Reference	Traction force (daN)	Primitive pulley $\varnothing$ (mm) recommended	Primitive pulley $\varnothing$ (mm) mini
-	-	-	-
-	-	-	-
SFVTCR10	3	40	30
SFVTCR13	5	50	40
SFVTCR17	10	75	60



## SOUPLEX 85 ShA or TOTALGRIP translucent 70 ShA PU surfaces



Reference	Colour	SMOOTH	STUDDED	SAW-TOOTH	SG3	TRELLIS
Souplex	green/white	SLI	SPI	SUS	SSG	SLO
Totalgrip	translucent	TLI	TPI	TUS	TSG	TLO

## Supergrip coatings



GREEN PVC 40 ShA



BLACK RUBBER 60ShA

Reference	NA	NC
-----------	----	----

## Other surfaces



POLYESTER FELT



ARAMID FELT



LINATECH 40 ShA



PARABLOND 45 ShA

Reference	FP	FA	LI	PA
-----------	----	----	----	----



CELLULAR FOAM 20 ShA



SYLOMER FOAM 40 ShA



RUBBER 30 ShA



LYCRA 25 ShA

Reference	MC	MS	CA	LY
-----------	----	----	----	----

